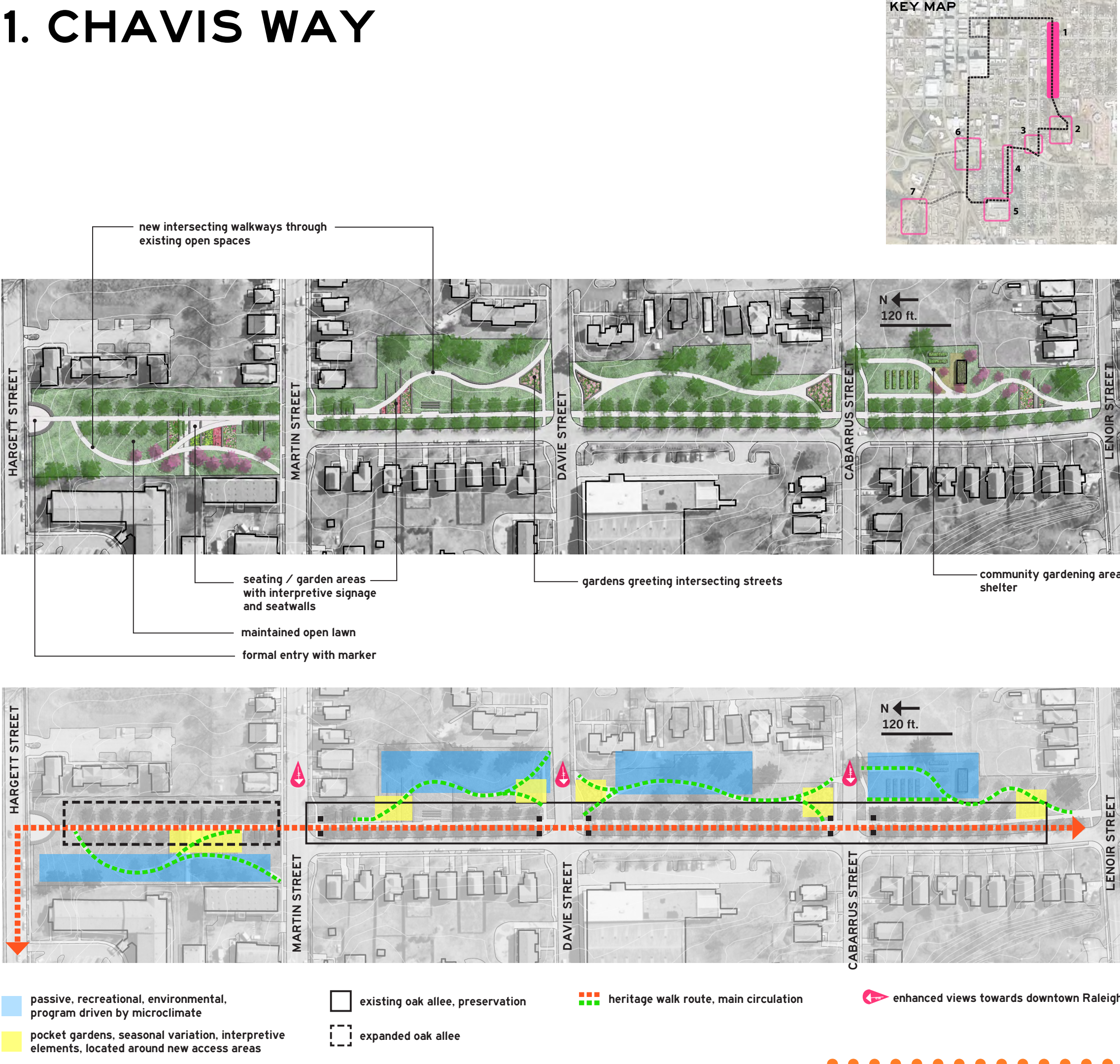


1. CHAVIS WAY



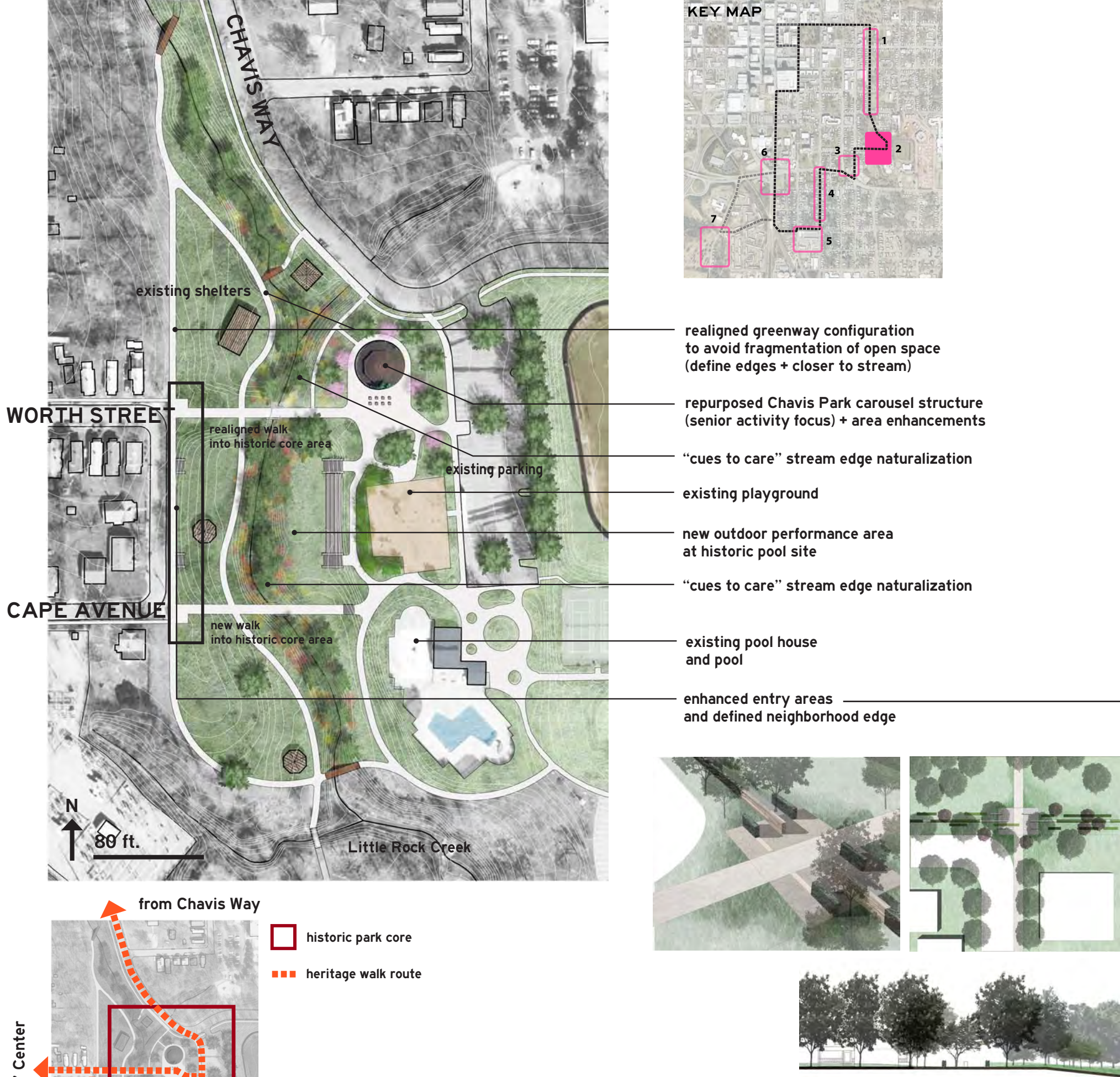
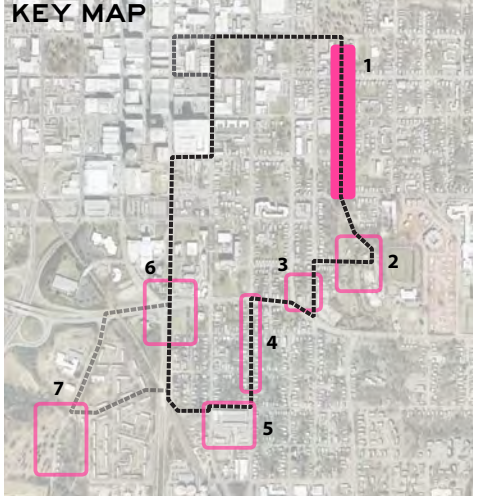
John Chavis Timeline Gardens
A storytelling concept honoring John Chavis, a prominent antebellum African American Raleigh educator, may be embedded within the linear and processional framework for this improved "park" space. A new secondary curvilinear path network will intersect with the main oak allee path along Chavis Way at several points, where there will be intimate and interpretive garden areas with signage, markers, and seatwall planters.



Chavis Way Intersections
Being elevated slightly, Chavis Way currently offers sweeping views towards the downtown Raleigh skyline where major streets intersect. These intersections will be improved, not only to enhance these views towards the city, but also to create more welcoming visual "entrances" into the park spaces for pedestrians travelling on these streets.



Chavis Way Community Gardening
Chavis Way is part of the city greenway system but has the benefit of large and underutilized abutting open spaces. Though the primary intent is to keep Chavis Way a passive and unprogrammed leisure space, a community gardening hub can be created on the southern most parcel, where the advantages include the existence of appropriate microclimate and its direct connection to the entrance of Chavis Park, a major neighborhood park.



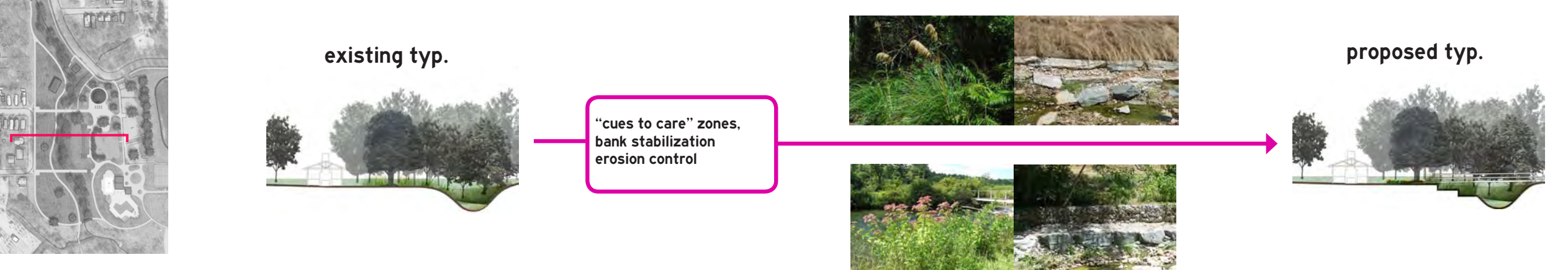
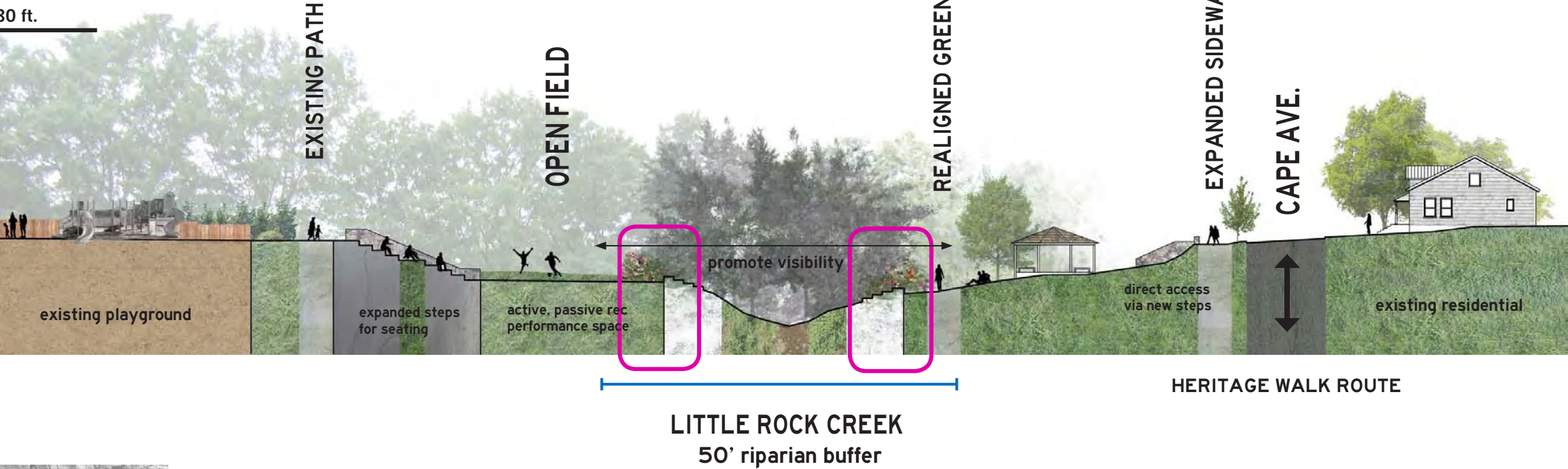
2. CHAVIS PARK EDGE



Chavis Park Edge (Cape Avenue)
While there are existing park signs, the park lacks a formal edge along Cape Ave. which borders the neighborhood. Creating an unobtrusive visual separation between the park and neighborhood with enhanced entry areas and improved sight lines will help reclaim and strengthen the identity of Chavis Park as a historically significant city open space.



Little Rock Creek Maintenance
After a successful restoration project in the 1990's, Little Rock Creek, which runs through Chavis Park, is an ecological asset for the park and the neighborhood. However, its fully naturalized state sometimes promotes concerns regarding safety after several instances of crime have occurred in the park. The "cues to care" strategy will improve visibility and combine effective bank stabilization and erosion control with a maintenance plan to promote a "maintained" and "landscaped" appearance at its edges.



SOUTH PARK HERITAGE WALK

PARTNERS: Several organizations have agreed to work together to make this vision a reality. They include:

- South Park - East Raleigh Neighborhood Association (SPERNA)
- Central Citizens Advisory Council
- City of Raleigh Parks and Recreation Department
- NCSU College of Design, Downtown Design Studio
- NCSU Linguistics Program
- Raleigh / Wake Chapter of NCCU Alumni Association
- Raleigh City Museum
- Richard B. Harrison Library
- Shaw University
- Gordon Smith, Business Community

VISION PLAN

PROPOSED IMPROVEMENT AREAS:

1. Chavis Way
2. Chavis Park edge
3. John P. "Top" Greene Community Center
4. Person Street
5. Carolina Trailways
6. MLK / Wilmington intersection
7. Mt. Hope Cemetery edge

3. JOHN P. “TOP” GREENE COMMUNITY CENTER



East Street Entry (by Cape Avenue)

Situated directly across from Cape Avenue, this new site entry will lead pedestrians to the community center and the neighborhood exhibit through a terraced “wet” garden. The gardens provide a visual welcome to the rear of the community center site with east walls and pockets of intimate sitting areas designed to stabilize the steep slopes and are also part of a scheme to create a naturalized and artful stormwater infrastructure for the site.



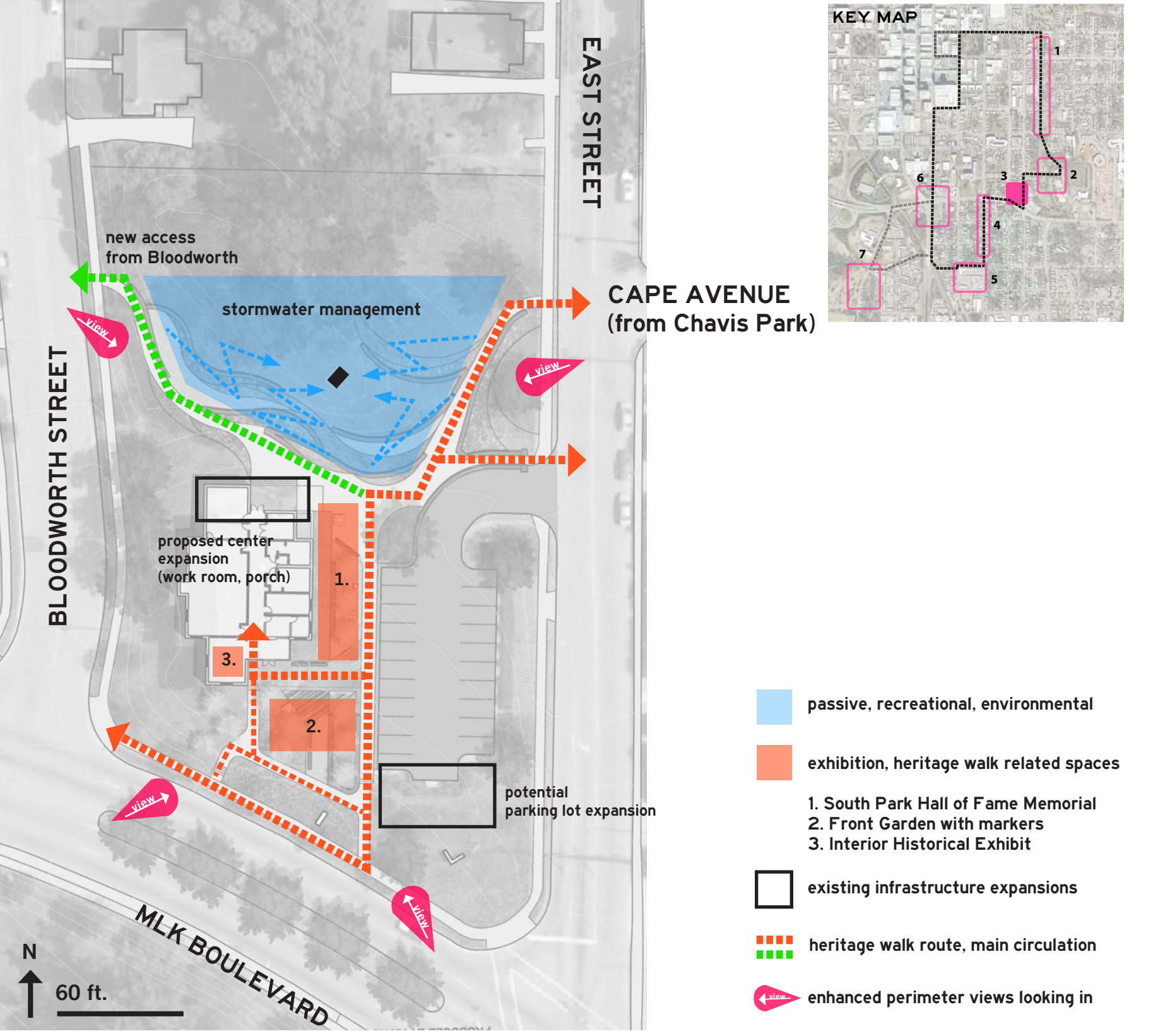
South Park “Hall of Fame” Memorial

An underutilized area next to the community center building will be dedicated to a modest outdoor “memorial” highlighting notable people, places, and events of South Park on simple markers that may double as potential seating and lighting elements for this space. It is also designed as an outdoor “respite” and a gathering area along the heritage walk including information, a potential kiosk, and other seating opportunities.

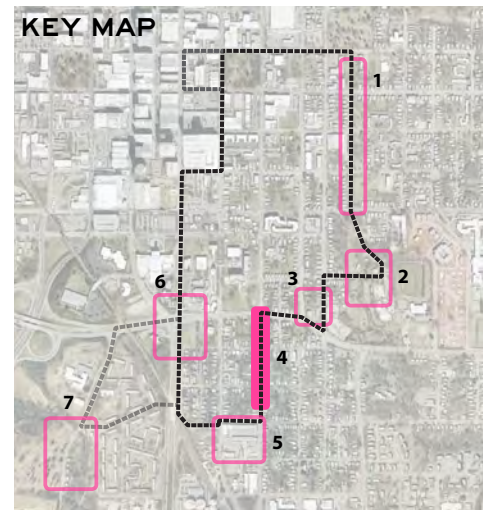


Enhanced Building Entry

The front entry of the community center will receive a facelift. New paving materials and seasonal interest trees and plantings will be introduced to differentiate this area from the rest of the site and will “announce” the presence of an indoor exhibit from all approaches. Reconditioned and new dedicated markers will be placed strategically to invite people into the community center.



4. PERSON STREET STREETScape



curb extensions and plantings at intersections

enhance walkability
ease pedestrian crossings
traffic calm

neighborhood and city green streets pilot

consistent street tree plantings

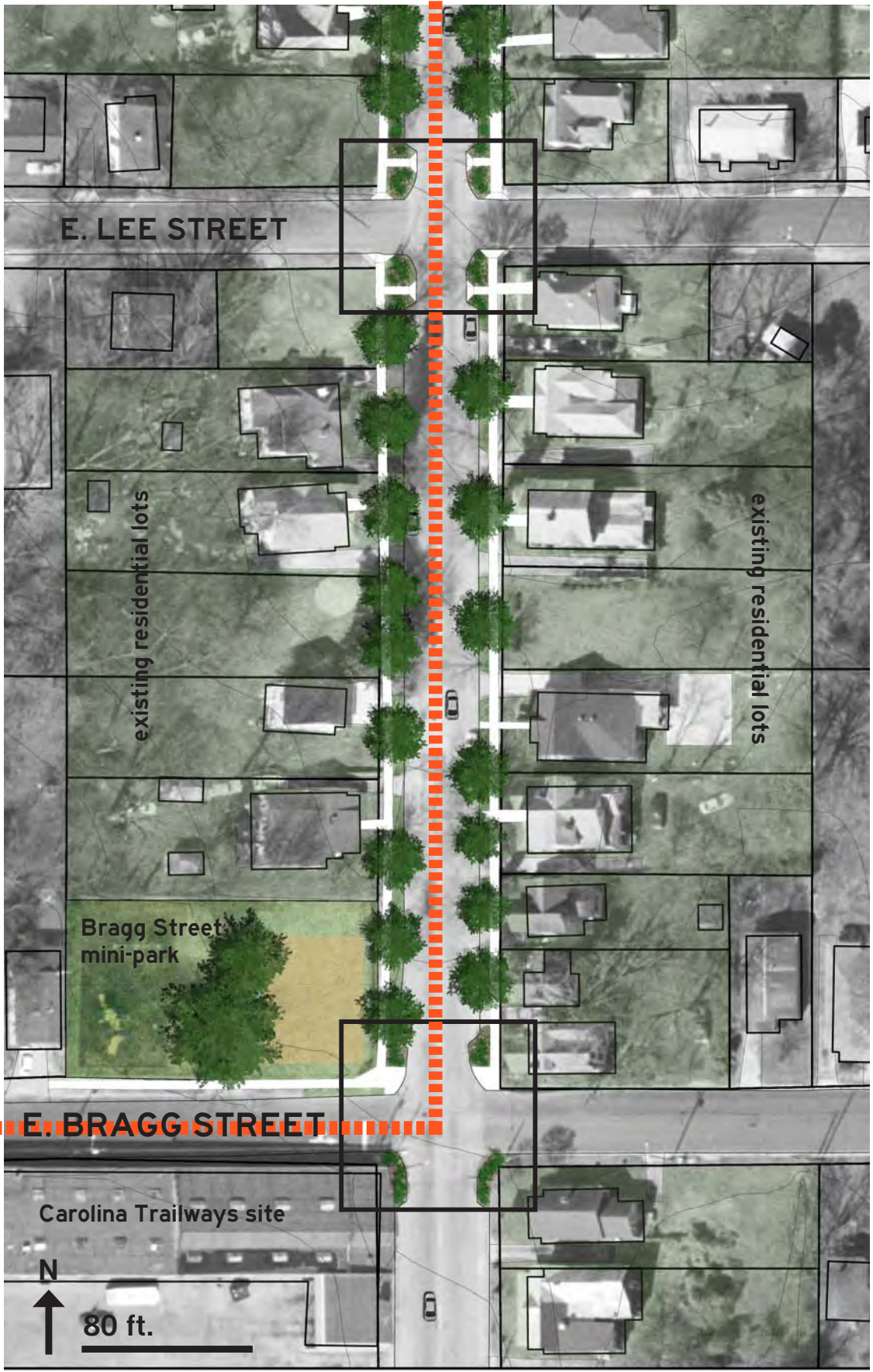
“front yard” grant program

gateway street to downtown

historical residential architecture

NCDOT regulations (state road)

traffic one-way north



Model Green Street

Though a busy city thoroughfare with heavy vehicular traffic, Person Street provides an opportunity to highlight the vernacular African American residential architecture which helped establish South Park - East Raleigh on the national historic registry. Vegetated curb extensions at intersections will combine traffic calming measures with increased pedestrian friendliness. A consistent street tree planting strategy and a potential “front yard” grant program will help transform this “gateway” street into a model green street for the neighborhood and the city.



SOUTH PARK HERITAGE WALK

PARTNERS: Several organizations have agreed to work together to make this vision a reality. They include:

- South Park - East Raleigh Neighborhood Association (SPERNA)
- Central Citizens Advisory Council
- City of Raleigh Parks and Recreation Department
- NCSU College of Design, Downtown Design Studio
- NCSU Linguistics Program
- Raleigh / Wake Chapter of NCCU Alumni Association
- Raleigh City Museum
- Richard B. Harrison Library
- Shaw University
- Gordon Smith, Business Community

VISION PLAN

PROPOSED IMPROVEMENT AREAS:

- Chavis Way
- Chavis Park edge
- John P. “Top” Greene Community Center
- Person Street
- Carolina Trailways
- MLK / Wilmington intersection
- Mt. Hope Cemetery edge