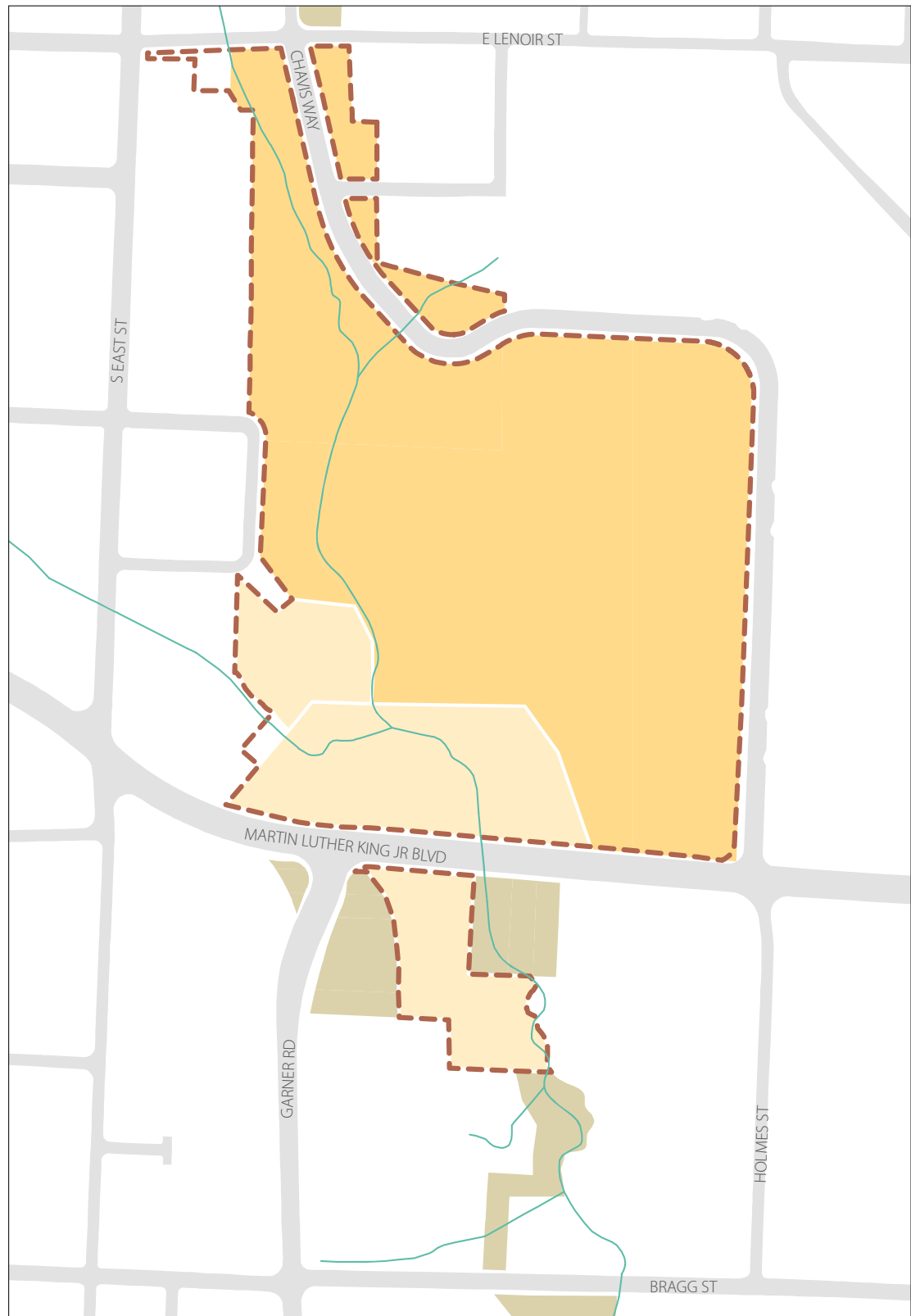


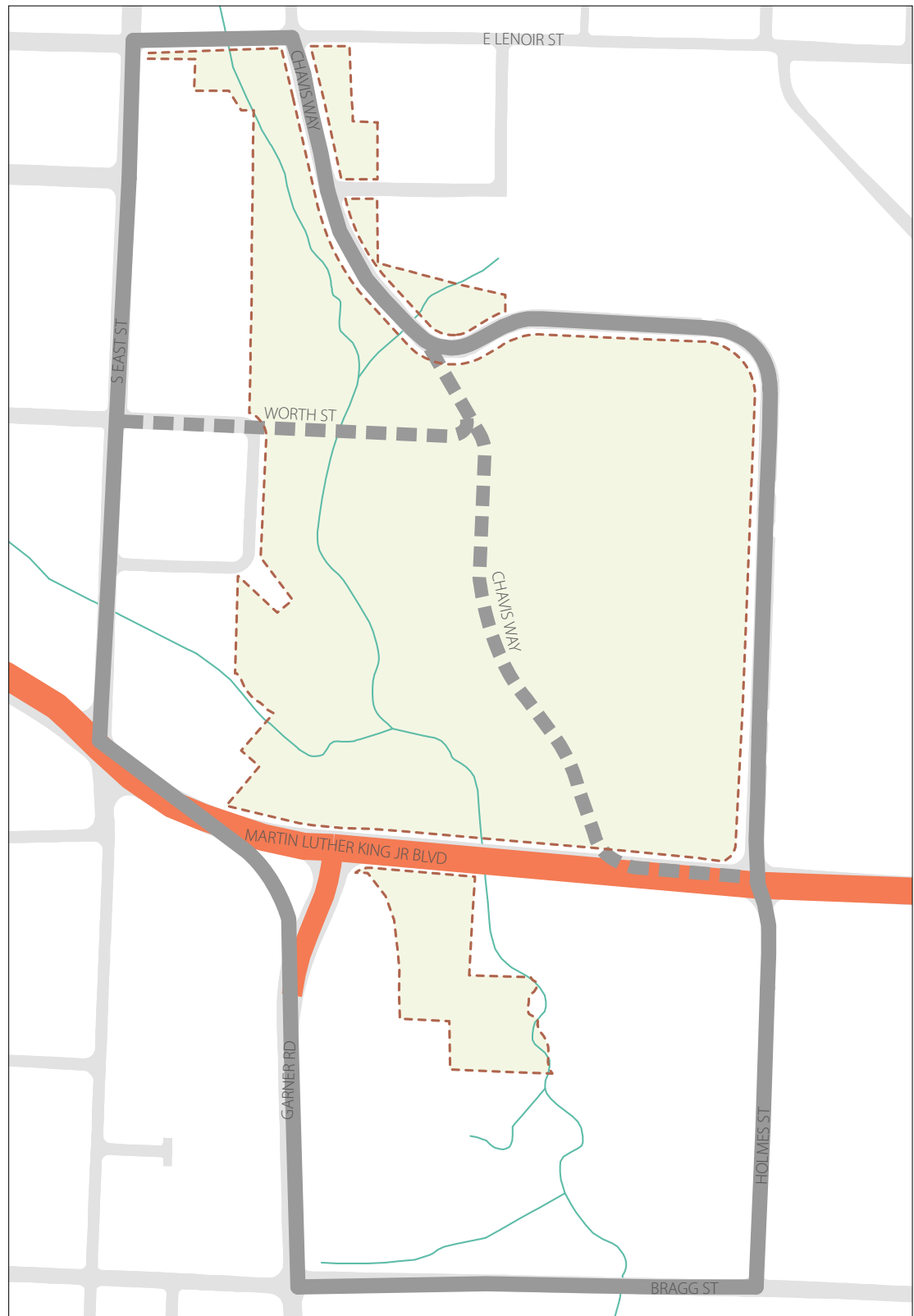
# Timeline Map Series

- Park Boundary History
- 2012 Park Boundary
  - 1970 Park Boundary
  - Parcels Added to Park (State of North Carolina)
  - Capital Area Greenway Parcels
  - Creek
  - Streets (present day)



# Timeline Map Series

- Circulation History
- 1937-1960 Access Roads
  - 1927-1960 Roads Removed
  - Roads Added (1990)
  - Surrounding Streets
  - Current Park Boundary



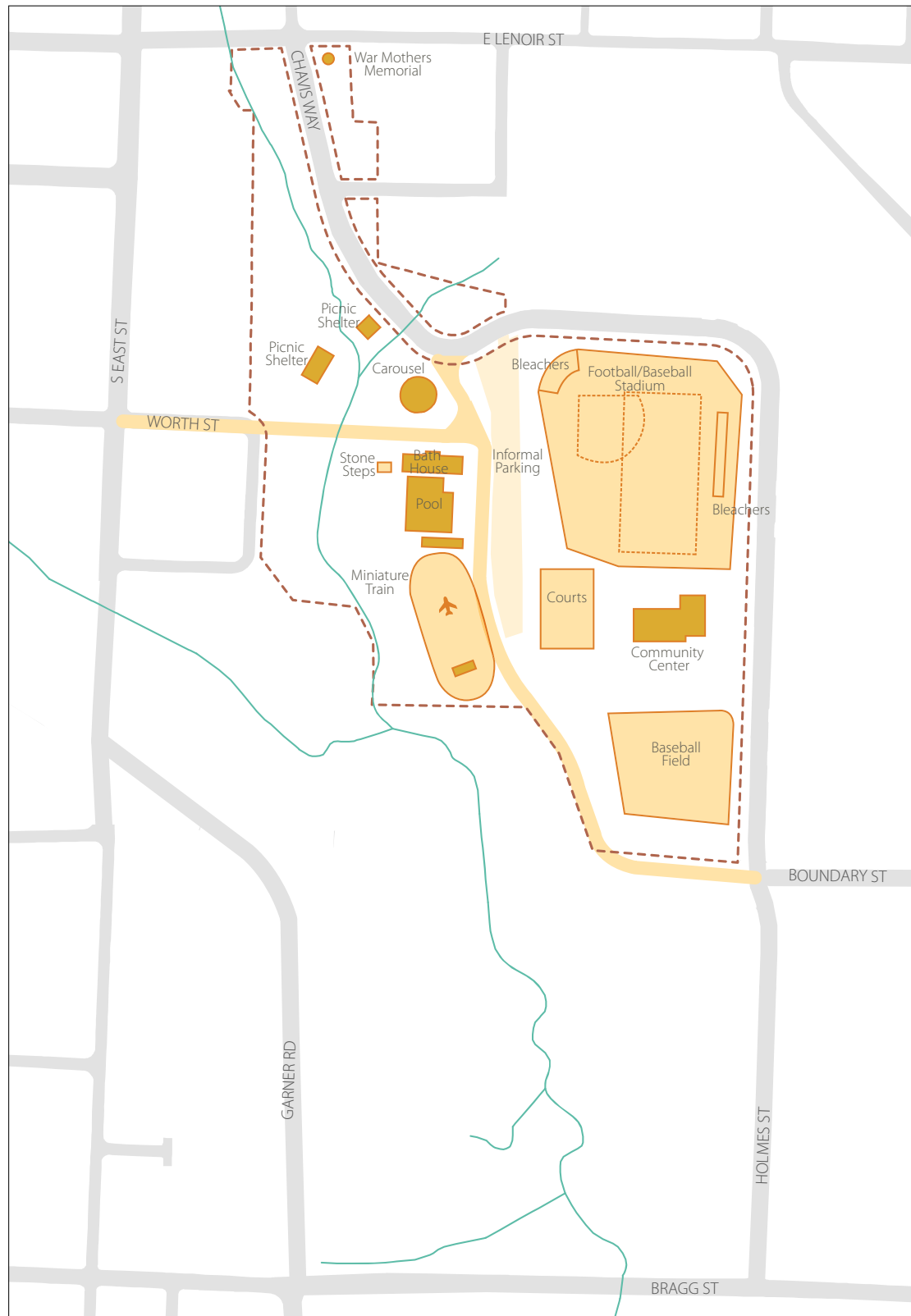
# Timeline Map Series

## Timeline

**1937 - 1960**

- Buildings
- Recreational Features
- Park Boundary (ca 1970)

- Creek
- Streets



# Timeline Map Series

## Timeline

### 1937 - 1960

- Buildings
- Recreational Features
- Park Boundary (ca 1970)

### 1960 Features Moved or Removed

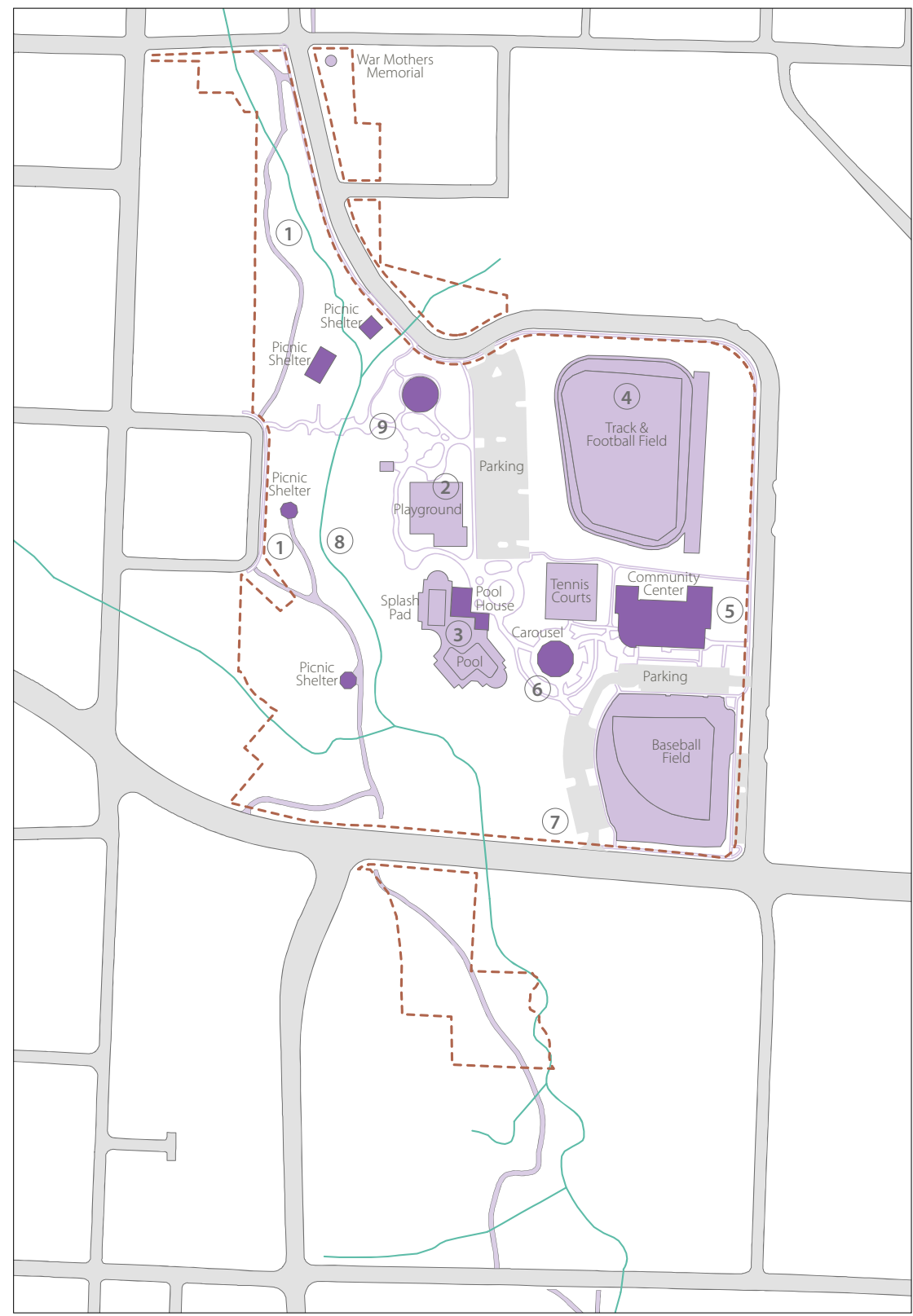
- ① Carousel Relocated
- ② Pool Complex
- ③ Miniature Train
- ④ Airplane Slide
- ⑤ 1 of 3 Tennis Courts
- ⑥ Stadium Seating
- ⑦ Worth Street Entrance

- Creek
- Streets



# Timeline Map Series

- Timeline**
- Present Day**
  - Buildings
  - Recreational Features
  - Paved Walkways
  - Parking
  - Park Boundary
- Features Added or Modified**
- ① Greenway and Shelters (2)
  - ② Playground
  - ③ Pool and Splash Pad
  - ④ Track
  - ⑤ Community Center Expansion
  - ⑥ Carousel Relocation
  - ⑦ MLK Entrance and Parking
  - ⑧ Conservation Easement
  - ⑨ Paved paths
- Creek
  - Streets



# Timeline Map Series

- Timeline**
- Present Day**
  - Buildings
  - Recreational Features
  - Paved Walkways
  - Parking
  - Park Boundary
  
  - 1960 Features Retained**
  - Buildings
  - Recreational Features
  
  - Creek
  - Streets

